

Rocket® CorVu NG for Rocket MultiValue

Rocket CorVu NG is Going Native with Rocket® D3 DBMS, Rocket® mvBase DBMS, Rocket® UniVerse and Rocket® UniData

On-demand web and mobile dashboards and reports—incorporating rich, intuitive visualizations—meet the needs of all enterprise users

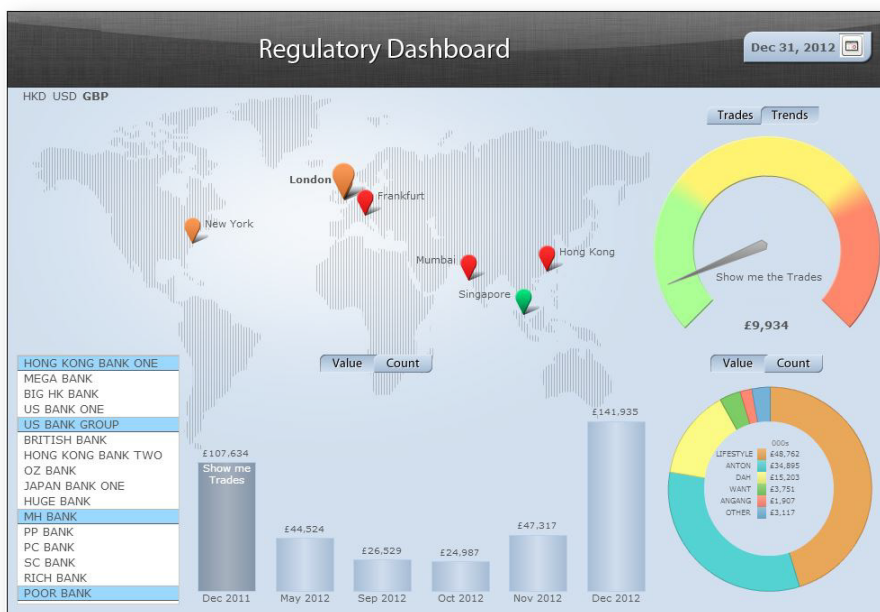
Stunning visualizations for existing queries, including Rocket® System Builder (SB/XA) Queries and Smart Queries

Powerful inline analytics support transforming, merging, tabulating, and federating data across an unlimited number of sources

Predictive data modeling directly integrates forecasts into reports and dashboards

On-demand, one-click charting and wizard-driven generation of “quick reports”

Interfaces to LDAP and Active Directory keep content secure



Accessing MultiValue Data Just Got Easier! Rocket® CorVu NG Delivers Exquisite Data Visualization and High-Impact Analytics Natively from Rocket MultiValue Data Sources - Providing Unique Value and Insight

Understanding your data is critical to making the right business decisions. In order for you to efficiently operate your business, your data must be immediately available to the people who need it—in a form that is easy to understand and to work with. CorVu NG now features a fully native interface with MultiValue databases: Rocket® D3 DBMS, Rocket® mvBase DBMS, Rocket® UniVerse and Rocket® UniData. The CorVu MultiValue Native Query editor presents a redesigned, intuitive user experience, enabling users to assemble queries against D3, mvBase, UniData, and UniVerse sources by using MultiValue native syntax. A stored procedure on the

DB side transforms the data into CorVu NG ‘dynamart’ type result sets. These result sets then can be propagated across the full array of reporting/visualization capabilities of CorVu NG or can be federated into data from any other platform.

Native Syntax - Seamless Integration

The CorVu MultiValue native interface allows the rapid assembly of queries via an intuitive, ‘MultiValue centric’ UI. It provides native access to MultiValue dictionary items that allow developers to browse

and select from existing field definitions. Developers can leverage existing processes and expressions defined in field definitions and consume existing Rocket System Builder or Smart Queries inside of CorVu. Future releases will support an even broader range of MultiValue object types.

From Visual Apps to Embeddable Content

Deploying ultra-rich visualization has never been easier in CorVu NG. With the CorVu Express component, dashboards can be transformed into stand-alone visual applications. With a minimal server-side footprint that is perfect for streamlining the user experience, CorVu NG is the perfect visual application development and deployment tool. Fully interactive, with write-back capability, it delivers visual control—and greater value—to the user base.

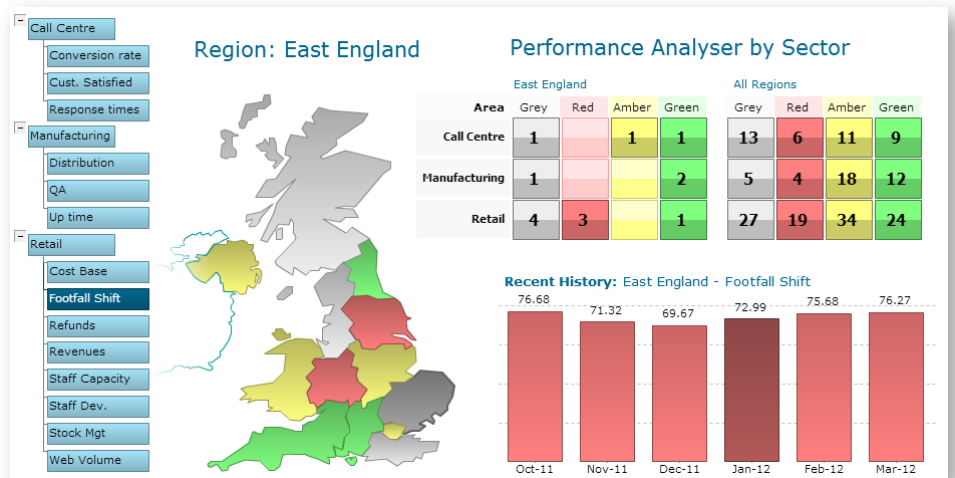
Work with the Freshest Data all the Time

CorVu NG allows you to provide your users with dashboards and reports that provide up-to-the-minute data. Fresh information can be concurrently drawn in real time from across the enterprise—from transactional data sources, data warehouses, and of course, D3, mvBase, UniData, and UniVerse. Better yet, a built-in processing engine means that a data warehouse is not required to read, merge, tabulate, transform, and analyze data from multiple systems.

Protect Your Enterprise Data

Manage Data Interactions

CorVu NG's robust application security model sits on your existing database-level security infrastructure and—by connecting to your LDAP/Active Directory



or using the built-in security provider— can control every aspect of enterprise-wide interaction with your valuable data.

Control User Access to Data

CorVu NG also allows you to control user access, so users see only what you allow them to see. It includes comprehensive resource governing that allows you to limit the number of rows or bytes that can be returned from designated queries, and the type of queries that can be submitted by users. The security system also tracks usage of all objects, enabling you to audit activity by user, query, report, or dashboard.

Tailor the Look and Feel of Reports for Specific Users

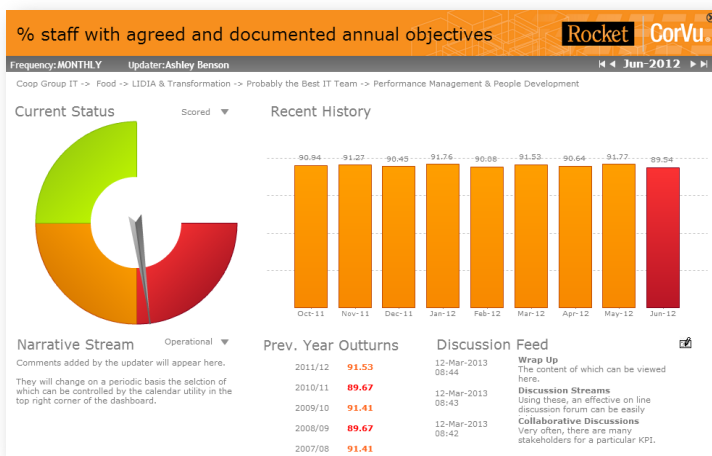
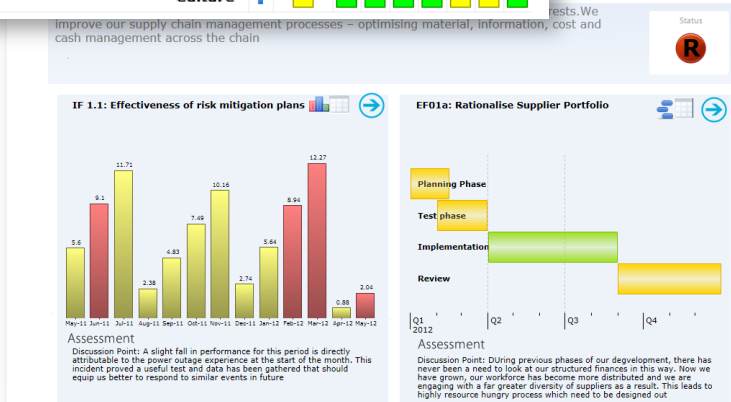
CorVu NG's dashboards and reports can dynamically tailor content, based on an individual user's security level. For example, a sales dashboard may present top-line revenue, as well as profitability, to executives. The same sales dashboard may limit business managers' view to just top-line sales data.

System Requirements

Workstation

CorVu NG's Workstation application (administration and content development) supports Windows, Linux (x86) and Mac OS X 10.6 and later.

	Group	Operations	Provisioning	Specialist	Corporate	Technology	Finance	Architecture
Probably the Best IT Team	Green	Yellow	Green	Yellow	Green	Yellow	Green	Green
Resourcing +	Green	Yellow	Green	Yellow	Green	Yellow	Green	Green
Performance Management & People Development -	Green	Green	Green	Yellow	Yellow	Yellow	Yellow	Yellow
% staff with agreed and documented annual objectives	Green	Green	Green	Yellow	Yellow	Yellow	Red	Green
% Staff completed mandatory training modules	Yellow	Yellow	Green	Red	Green	Green	Green	Green
% Permanent Staff completed mandatory training	Green	Green	Green	Red	Green	Green	Green	Green
% Contractor Staff completed mandatory training	Green	Green	Green	Yellow	Yellow	Yellow	Yellow	Yellow
% Temporary Staff completed mandatory training	Yellow	Yellow	Yellow	Yellow	Yellow	Yellow	Yellow	Yellow
Capability	Green	Green	Green	Green	Green	Yellow	Yellow	Red
Award & Reward -	Green	Yellow	Green	Green	Red	Green	Yellow	Yellow
Spend on Simply Thank You	Green	Yellow	Yellow	Red	Green	Green	Green	Green
Simply Thank You	Green	Green	Green	Red	Green	Yellow	Yellow	Yellow
Culture +	Yellow	Green	Green	Green	Yellow	Yellow	Yellow	Yellow



Web Components

CorVu NG's web components run on any J2EE web application server capable of running Java web applications such as:

- ❖ Apache Tomcat
- ❖ IBM WebSphere

Data Servers

CorVu NG supports the following data servers:

- ❖ Rocket® UniData
- ❖ Rocket® UniVerse
- ❖ Rocket® D3 DBMS
- ❖ Rocket® mvBase DBMS
- ❖ SQL Server
- ❖ MySQL
- ❖ Oracle
- ❖ DB2 (LUW)
- ❖ Informix Dynamic Server
- ❖ Most other JDBC- compliant data sources
- ❖ XMLA-compliant OLAP data sources

Drivers

A JDBC driver is required to access all relational data sources. Drivers are not required for OLAP servers or U2 data sources.

Mobile

The free CorVu NG mobile device application, Rocket MyVu, is now available for Android mobile devices and the iPad.

- ❖ Requires Android 2.2 or later for mobile devices running applications and software on the Android operating system
- ❖ Requires iOS 6.1 or later. Compatible with iPhone, iPad, and iPod touch.

- www.rocketsoftware.com
- info@rocketsoftware.com
- twitter.com/rocket
- www.youtube.com/rocketsource
- www.linkedin.com/company/rocket-software
- plus.google.com/u/0/104109093105646534918

